

# Fall 2010

## Classes, Events, Activities



### Director's Message Justin Cutler

The first Director's message will be delivered from the point of view of the observer of Justin Cutler's first half year with La Pine Park & Recreation District's changeover to the new publicly funded district voters desire. This is a formal update on the past six months.

Before we talk about what happened when Justin arrived, we need to tell the district how Justin came to La Pine. Justin started his work with parks when he decided to concentrate on Recreation Administration in college. He graduated from Washington State University in Pullman and then, after a couple of years of full time work, he went to Portland State University, continuing his full time job while completing his Masters in Public Administration in August of 2007. Not one to waste any time, he had worked in Wilsonville at the Community

Continued on back page

### In This Issue:

- Rosland Campground Update
- Parks & Rec Foundation Begins
- Acting Classes from La Pine's Best Coach
- Creative Writing
- Photography For all levels
- Football
- Soccer
- Basketball
- A Halloween Event for everyone in the family!
- Much, much, more.



### Photo Day Camp For Kids/Families:

**Date/s:** Wednesday August 18th and Saturday August 21st

**Time:** 9am - Noon

**Place:** Ogden Park for instruction/1st shoot, then to Paulina Falls with stop at the overlook.

What: Join professional photographer Mike Jensen for a fun and educational morning photography day camp. This event is designed for kids and parents alike, and can be attended by owners of both film and digital cameras of all types. We'll start at Ogden Park for some minimal instruction on how cameras work, and how to "frame" a photograph. We'll take some pictures at the foot bridge, and then ride up the hill first stopping at the overlook of the Cascades on our way to Paulina Falls. After the event each participant will be encouraged to submit two of their favorite photos to be exhibited on the La Pine Parks & Rec website, and Mike Jensen's web site and Facebook page!

Price: \$10 per person, \$20 for the whole family! Course #1005



### Photography 101:

**Saturday September 25, 2010 9am – Noon,  
& Tuesday September 28, 2010 7pm**

New to digital photography? This class, for the absolute beginner, helps you find out what to look for in a camera, and then how to work its basic settings to get the best picture. This class covers the basics of Photography from the basic composition to the components of exposure (ISO, Shutter Speed, Aperture). This is a two part class with instruction and hands on photography in session one, and display of photos, editing/preparation in session two. Attendees are encouraged to bring their cameras, camera operational book, and a tripod if you own one. A working knowledge of a personal computer is helpful.

Price: \$50 Course #1006

Also, watch for Photography 201 (Intermediate), and Photography 301 (Advanced) in October and November.

### Parks & Rec Foundation

The La Pine Park & Recreation District is in the process of building a solid foundation for the present and the future, as our community and District grow together. A cornerstone in this process is the establishment of a Non-Profit Foundation to support the work of the District. This Foundation, similar to the

Friends of Deschutes County Library, will support the District and provide a tax-deductible receipt to donors who donate anything from equipment to land.

Furthermore, the Foundation

Continued on page 3

### La Pine Community School

This Fall La Pine Park & Recreation, Bend-La Pine School District and several other partners will be rolling out an afterschool enrichment program for youth in 6-12th grade. This will provide activities during the out-of-school hours until 6:00 p.m. weekdays throughout the school year. Also, the Community School will work on bringing more evening educational opportunities for adults and families. The activities will likely get underway in October. At the time this went to press, the details have not been set. For the latest information please go to our website at [www.lapineparks.org](http://www.lapineparks.org).

## Photography 101:

Saturday September 25, 2010 9am – Noon, & Tuesday September 28, 2010 6pm - 9pm

New to digital photography? This class, for the absolute beginner, helps you find out what to look for in a camera, and then how to work its basic settings to get the best picture. This class covers the basics of Photography from the basic composition to the components of exposure (ISO, Shutter Speed, Aperture). This is a two part class with instruction and hands on photography in session one, and display of photos, editing/preparation in session two. Attendees are encouraged to bring their cameras, camera operational book, and a tripod if you own one. A working knowledge of a personal computer is helpful.

Price: \$50 Course #1006

Location: Parks & Rec Office 16405 1st Street, La Pine, OR 97739



## Photography 201

Saturday October 16, 2010 9am – Noon, & Tuesday October 19, 2010 6pm - 9pm

Get more out of your digital camera. Take your camera off auto in this hands-on class and start taking better pictures. Bring your digital camera and user guide. Students taking this class may also be interested in Photoshop Elements. Prerequisite: Photography 101 or some computer and digital camera experience.

Price: \$75 Course#1007 Location: Parks & Rec Office 16405 1st Street, La Pine, OR 97739

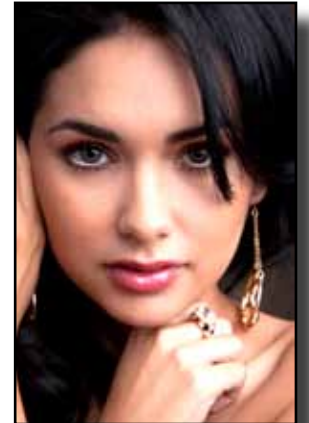
## Portraits With Any Light - In Any Light

Tuesday November 9, 2010 6-9pm, & Tuesday November 16, 2010 6-9pm

Just in time for the holidays, and for every level of photographer! Learn how to take a great family portrait for your holiday cards, or environmental portraits in any condition with any lighting available. This class can be taken by owners of any type of camera. Class includes an informative piece as well as a "hands on" photo session with professional studio lighting and backdrops. Also included will be some light photo retouching tips using Photoshop Elements.

Price: \$75 Course #1008 Location: Parks & Rec Office 16405 1st Street, La Pine, OR 97739

*Whether you're a novice with a Point & Click, a beginner with a new DSLR, or more advanced, there is a class for every level, and every level WILL LEARN!*



# Classes/Activities

## Adult Open Gym:

Come and get your game on! Whether you're a former college "baller" or just some one who likes to have fun, there is a basketball game for you.

Ages: 18 +  
Dates: Tuesday's through August  
Times: 7:00 p.m. to 9:00 p.m.  
Fee: Drop in, \$3 per person

### Instructors Needed!

If you or anyone you know is an expert at something and enjoys teaching, La Pine Park & Recreation would like to work with you to set up classes and activities. This could be a great way to supplement your income and possibly start a new career or business venture. If you are interested in taking the next step please call Justin Cutler, Director of Parks & Recreation at

## Youth Football 2010

This year we have two exciting programs to offer. Flag Football for players going into kindergarten through 3rd grade and Tackle Football for players going into 3rd grade through 6th grade. 3rd graders who would like to play Tackle will be required to complete a skill and physical evaluation by league administrators. The registration deadline is August 6th. Players registering after the 6th will be put on a waiting list and placed on a team as space allows.

Ages: 5 to 12  
Dates: 8/6-8/8: Tryouts  
8/13: Equipment Hand-out  
8/16: Practices begin  
9/11: Games begin  
Fee: \$40 Flag Football  
\$75 Tackle Football  
Course #: 1001 Flag Football  
1002 Tackle Football

## "Finding your Inner Lulu" aka Basic Acting Techniques

Our first class is for Adults. The participants would work on clarification of their roles in real life, dealing with the beginning, the middle and the ends of creating characters and playing roles. All of this would coincide with scene work, rehearsal and performance, and learning basic acting techniques.

Instructor/Coach: Teri Myers, MFA- Theatre U of P  
Ages: 18 and up  
Dates: Tues. 9/14 to 10/12  
Times: 6:00 p.m. to 9:00 p.m.  
Location: Finley Butte Park Building  
Fee: \$65, students will need to purchase a textbook after the first class.

Course #: 1004

## CREATIVE Writing

This class will explore using the five senses to enhance your writing. There will be a structured class syllabus that will serve as a class guide. It will be handed out at the first class. Be ready to try writing informative articles, essays, narratives, poems and stories while you boost your skills using a non-traditional approach to writing. You may even decide to write your life story!

Together we will explore new methods, write and share our written thoughts with others in a supportive classroom that is fast paced, fun-filled, and energy packed. Join other writers in a writing class where you have the freedom to express who you are as a writer while you learn how to be better at what you love to do!  
Instructor: Teri Myers  
Ages: 12 and up  
Dates: Tues. 10/19 to 11/16  
Times: 6:00 p.m. to 9:00 p.m.  
Location: Finley Butte Park Building  
Fee: \$50

Course #: 1003

## La Pine Trunk or Treat!

La Pine Park & Recreation will be hosting the First Annual La Pine Trunk or Treat at the La Pine Event Center. The celebration will include games, trunk or treating, a bounce house, best costume contest, best pumpkin carving contest and other creative competitions. If you plan on coming in costume we ask that it be family friendly and appropriate for all ages. If you would like to host an activity booth or volunteer please call the Office at 541.536.2223 for more information.

Ages: All Ages  
Date: 10/31/10  
Location: La Pine Event Center  
Fee: Free

## White Building Is Now La Pine Event Center

After three months of planning and public input, the LPRD Board of Directors approved the concept plan for the White School Building on April 19th, and approved the name change to La Pine Event Center (LPEC) on May 3rd. The board has moved forward with plans to remodel the building to be energy efficient and available for use all year round!

When the new WSB was built it was put up at a time when fuel prices for heating were quite low. The building was never insulated properly and it has several serious condition problems making it unfit to use during the cold months. The basketball court is not complete and the baskets that have been used are not safe, in that they can fall onto a person who dunks and holds the edge of the basket during play. There are no permanent markings for court games on the floor. There is adequate storage.

The LPEC remodel will take place in two stages. The estimated cost of the building remodel would be about \$1.8 million. The first stage will address the makeover, at an estimated \$967K. The District will take out a low cost loan for \$500K from the Special Districts Association of Oregon. The loan will be paid back with tax revenues and rental fees from the LPEC events. The initial monies will go towards improving the HVAC systems, replacing walls, ceilings and insulation. There will be an upgrade in the bathrooms, making them ADA accessible. Lighting will also be brought into the 21st century.

Other features that are planned for the building include a teen lounge for after school. A multi-purpose room (formerly the gym area), classrooms, a re-vamped kitchen and community family room will also be part of the first stage renovations.

What was once a marginal use (8 months of the year) facility will now be ready for a 12-month schedule. The remodeling will make the LPEC a safe year round facility.

The LPRD will seek an additional \$394K worth of grants and donations to complete projects that include replacing windows. Two youth sized basketball courts, new replacement furniture and needed equipment. The computers will be reused for a computer learning lab, existing office and tables, chairs and other furniture will be reused or replaced if irreparable. Phase I of Construction will likely begin in spring of 2011 and should be completed before the end of 2011.

The board has asked that emphasis will be on providing local jobs to local bidders whenever possible.

If you would like to see the approved concept for LPEC, please come by the LPRD office and take a look at the plans. You can also find the plans on our website: [www.lapineparks.org](http://www.lapineparks.org).

## Rosland Campground Update

The historical sign in Rosland Campground reads,

"USE OF THE CAMPSITE DATES BACK TO 1826 WHEN HUDSON'S BAY COMPANY TRAPPERS LED BY PETER SKENE OGDEN TRAPPED FOR BEAVER IN THIS AREA.

IN 1897 THE ROSLAND POST OFFICE WAS ESTABLISHED ON THE EAST SIDE OF THE RIVER. B. J. PENDRA WAS NAMED POSTMASTER.

DENNIS MATTHEWS WAS THE FIRST RANGER AT THE ROSLAND RANGER STATION ESTABLISHED HERE IN 1908 AND ABANDONED IN 1933. THIS CAMPGROUND WAS DEVELOPED IN 1965 THROUGH THE COOPERATION OF LA PINE RESIDENTS AND THE U.S. FOREST SERVICE."

Why? Rosland Park was La Pine's main park back in the beginning of the last century.

LPRD wishes to thank Chuck Lee, Neal Russell and the many community volunteers who gave many long man-hours towards Rosland's clean-up project this year: Community Action Group, the Crescent Creek Community Church and a myriad of others who came out on weekends and weekdays to help do everything from cut

trees and clear brush to prepare paths and pick up litter.

This year there is a new vault toilet funded from a grant received from the City of La Pine.

The camp has eleven overnight spaces to rent and Camp Hosts, Tim and Betty, are on the premises to help campers get settled in for their stay. The LPRD is currently working with different government agencies to get permits and hopefully a grant that will provide LPRD with funds for river access for swimming or tubing.

This August 17th at 6PM the LPRD will host an Open House at the campground to get input on the future of the path. At that meeting we will gather your ideas and then present a draft plan to the Board of Directors in late September and a final plan in October. Following Board approval of the final plan, District Staff and Volunteers will apply for grants and implement the plan when funds are secured. Hopefully we can begin construction the summer of 2011.

If you have ideas about Rosland Campground, would like to volunteer or get information about how to use the park call 541-536-2223 for information.

## La Pine Park & Recreation District Board Members

**Tony DeBone, Chairperson**  
**Dan Cram, Vice-Chairperson**  
**Bob Metcalf**  
**Sheila O'Malley**  
**Arlo Fertig**

**All board members are elected at large and serve four year terms.**

## Foundation from page 1

will pursue grants and resources that may only be available to non-profits. This will expand opportunities to bring much need resources to restoring our parks and providing recreation programs for all.

Since this is the first year for the Foundation, we are looking for people to serve on the Board and help guide the formation of the Foundation and the District. If you are interested in serving in this capacity, please contact Justin Cutler at 541.536.2223.

If you would like to donate, money, land or equipment to the Foundation and receive a tax-deductible receipt, please contact Justin Cutler at 541.536.2223. Items will be accepted at the Foundations discretion and must be in good working order.

## Director's message from page 1

Services Department and then to Gresham, where he worked in the City of Gresham Parks and Recreation Department preparing him for working here in the high desert. During the interview process, his charming personality and great qualifications cinched the deal for him. He was hired and started work in January.

The first thing that Justin did was to gather information about how the District had been run over the past years. He familiarized himself with activities, the current operating budget and his responsibility to the LPRD Board of Directors. He also met with key community members. Then Cutler examined the vision that the board showed to him about "growing the newly funded public district." In order to create a solid foundation, many policies and procedures need to be crafted and adopted that would serve as a base for operation of funding and growth for District activities that serve the public. Working with volunteers in the office, Justin set about creating a database for volunteers and began to meet regularly with the district bookkeeper, Mary Thorson and long-time Rosland Campground Volunteer Lead, Chuck Lee.

Justin quickly established good rapport &

relationships with board members while he began the work of creating current policies concerning LPRD rentals for facilities, organizing basic clean-up for the different buildings and parks. The first six months has been about building a solid foundation to move our new district forward. Several foundational policies have been completed to date including: Personnel, Accounting, Contracting, Public Meetings and Public Records. During this next year we will write policies for Facility Rentals and an updated fee schedule.

But, the most exciting part of what the board is having Justin take on has been centered around the remodel of the LPEC-The La Pine Event Center formally called (name change became official in May) White School Building, or and the new 2010-2011 budget. Justin met with the Budget Committee in May in order to finalize a budget proposal for the June 7th Board meeting and public hearing over the budget. Cutler worked with local Budget Committee members on preparing the budget, he began to field the concept of "design build process" and is busy securing funds for the new remodel.

In terms of activities, while the district is building a foundation, some current offerings will include Adult Softball and the

upcoming Fall Football program. During the past six months we have sponsored the Easter Egg Hunt, Soccer, and La Pine Rocks. This summer, the offerings will be a little slim. This fall we will add a Middle and High School after school program through Community Schools. We are in the process of hiring a Community School Coordinator at this time. We will have other sports and events scheduled for children and adults as soon as the events can be tied down. If you have an idea about a class or program please call the office at 541-536-2223.

July first is the beginning of the new fiscal year. The board will resume a schedule of monthly meetings on the first Monday of every month. (If a holiday falls on the first Monday, the meeting will be held the following Monday.)

We are in a year of building the district and acclimating to the pulse of the community. Along with that, we are building procedures and policies that will give us a strong foundation and clarify how we will move forward.

We are working on establishing after school programs for MS and HS through Community Schools. LPRD is in the process of hiring a coordinator for the Community

Schools.

We have a mission to serve the people in our area by providing wholesome activities for families.

Justin Cutler can be reached at 541-536-2223.



*"Coming Together for a Healthy Community"*

For more information on everything that's happening at La Pine Parks & Rec go to <http://www.lapineparks.org>

## LA PINE PARKS & REC REGISTRATION FORM



Participant's LAST Name \_\_\_\_\_ Today's Date \_\_\_\_\_

Parent's FULL NAME (if participant us under 18) \_\_\_\_\_ Daytime Phone \_\_\_\_\_ Evening Phone \_\_\_\_\_ E-Mail Address \_\_\_\_\_

Mailing Address \_\_\_\_\_ Apt # \_\_\_\_\_ City \_\_\_\_\_ State \_\_\_\_\_ Zip \_\_\_\_\_

Emergency Contact \_\_\_\_\_ Relationship \_\_\_\_\_ Phone Number \_\_\_\_\_

Additional medical information or ADA information \_\_\_\_\_

Participant Age Range:  under 18  19-59  60+

Participant's FIRST Name	Gender	Course/Event#	Class/Event Title	Start Date	Fee	DOB (under 18)	Grade	T-Shirt Size

### AGREEMENT, WAIVER & RELEASE

PARTICIPANT WAIVER AND RELEASE OF LIABILITY: I HEREBY REGISTER MYSELF AND/OR MY CHILD FOR a course through the La Pine Park & Recreation District and authorize the staff, instructors, volunteers and coaches to direct him or her in participation of activities. I know of no mental or physical problems which may affect his or her ability to safely participate in this activity. I authorize the staff or volunteers to attend to any health problem or injury to me and/or my child that may occur while participating. I hereby release and hold harmless the Bend-La Pine School District, volunteers of La Pine Park & Recreation District Program, Crescent Creek Homeowners Association, La Pine Park & Recreation District Players, Coaches, Agents and Board of Directors, from any liability that may arise from my and/or my child's participation. I acknowledge that I am responsible for any medical expenses due to me and/or my child's illness or injury.

I/WE HAVE READ THE ABOVE WAIVER AND RELEASE. I/WE UNDERSTAND THAT I/WE GIVE UP SUBSTANTIAL RIGHTS BY SIGNING IT AND SIGN IT VOLUNTARILY

DATE \_\_\_\_\_

Participant (if over 18), Parent or Guardian (Signature/Relationship) \_\_\_\_\_